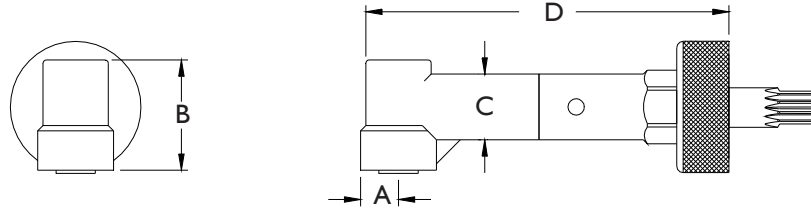


|      |      |       |       |       |                     |         |
|------|------|-------|-------|-------|---------------------|---------|
|      | A    | B     | C     | D     | 90 DEGREE DRILL     |         |
| INCH | .362 | 1.049 | .625  | 3.550 | MAXIMUM RECOMMENDED | .250    |
| MM   | 9.19 | 26.64 | 15.87 | 90.17 | DRILL DIAMETER      | 6.35 mm |



ALL BEARING 90 DEGREE DRILL ATTACHMENT

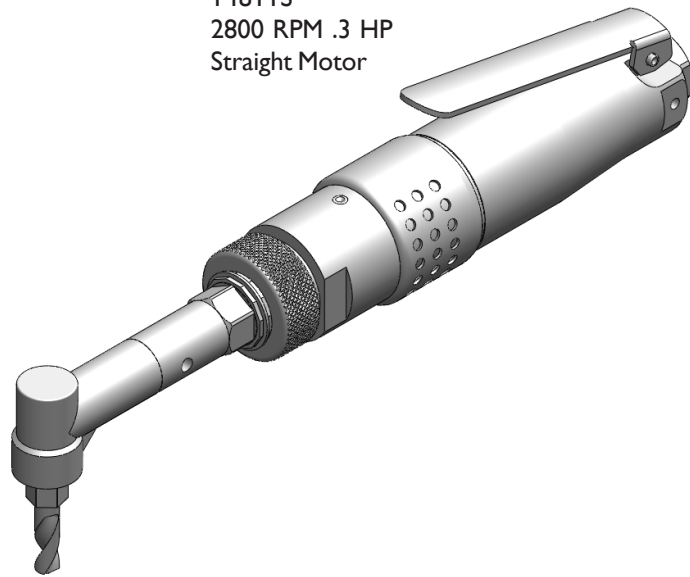


I4977 ATTACHMENT ONLY

PART OF THE JIFFY MODULAR DRILL SYSTEM



Shown with  
I481 IS  
2800 RPM .3 HP  
Straight Motor



You must select an  
internal thread

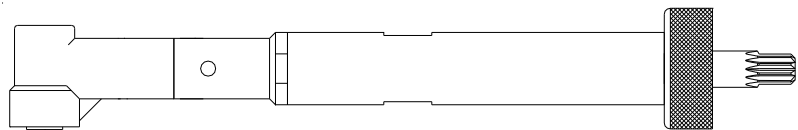
THREADED  
DRILL



COLLET TYPE  
DRILL



| INTERNAL THREAD CODE |   |
|----------------------|---|
| 1/4-28               | A |
| 10-32                | C |
| 9/32-40              | E |
| 7mm COLLET           | D |



ATTACHMENT SHOWN WITH OPTIONAL  
3.750" 95.25mm G EXTENSION ASSEMBLY

PHONE: 775 883 1072 FAX: 775 883 4857