

PLEASE READ AND FOLLOW ALL WARNINGS



UT7560C-1

1" PISTOL IMPACT WRENCH

Read Operating Instructions

Always become familiar with all the instructions and warnings before operating any power tool.

Always Wear Approved Eye Protection

Impact resistant eye protection should meet or exceed the standards as set forth in the United States ANSI Z87.1, Occupational and Educational Eye and Face Protection. Look for the marking Z87.1 on your eye protection to insure that it is an approved style. For further information, ANSI Z87.1, Occupational and Educational Eye and Face Protection, is available from the American National Standards Institute, Inc., 11 West 42nd Street, New York, NY 10036.

Hearing Protection is Recommended

Hearing protection should be used when the noise level exposure equals or exceeds an 8 hour time-weighted average sound level of 85 dBA. Process noise, reflective surfaces, other tools being operated nearby, all add to the noise level present in your work area. If you are unable to determine your noise level exposure, we recommend the use of hearing protection.

Avoid Prolonged Exposure to Vibration

Tools can vibrate during use. Prolonged exposure to vibration or very repetitive hand and arm movements, can cause injury. Stop using any tool if discomfort, tingling feeling or pain occurs. You should consult your physician before resuming use of the tool.

90 PSIG Maximum

This tool is designed to operate at

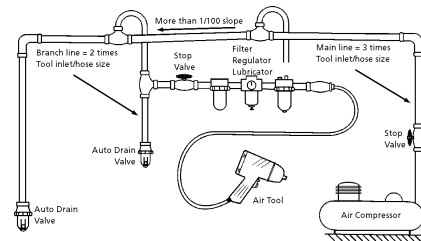
an air pressure of 90 pounds per square inch gauge pressure (90 PSIG) maximum, at the tool. Use of higher air pressure can, and may cause injury. Also, the use of higher air pressure places the internal components under loads and stresses they were not designed for, causing premature failure. The air supply should be clean and dry, preferably lubricated. For best results, drain the moisture from

WARNING:

Some dust created by power sanding, sawing, grinding, drilling, and other construction activities contains chemicals known to cause cancer, birth defects or reproductive harm. Some examples of these chemicals are:

- Lead from lead-based paints
- Crystalline silica from bricks, cement and other masonry products
- Arsenic and chromium from chemically treated lumber

Your risk from these exposures varies, depending on how often you do this type of work. To reduce your exposure to these chemicals, work in a well-ventilated area and work with approved safety equipment such as those dust masks that are specially designed to filter out microscopic particles.



Description

The Universal Tool professional tools feature alloy steel hammer cases that are machined from solid bar, not drawn or cast. The model number is laser etched on the hammer case for permanent identification. There is a high power to weight ratio, plus 100% parts interchangeability to the equivalent competitor's tool. The features include steel hammer case and three piece housing construction for ease of maintenance. Also included are an adjustable power regulator, ergonomic handle and a sound reducing muffler.



the tool. Tools shall not be used without guards and safety devices as furnished by the manufacturer. Where an air tool is modified or altered, the modifier shall provide the safeguards to enable it to be safely used in the operations intended and to comply with any applicable provisions as contained in ANSI B186.1.

Tool Installation

Pressure regulators shall be used to limit air pressure to the rated pressure where the supply pressure exceeds the tool's rated pressure. Air hoses and lines shall be relieved of compressed air before being disconnected or disjointed, unless there is automatic valve closing protection at the joint being separated. Synthetic lubricants which can cause deterioration of elastomer seals shall not be used in air systems of air tools.

Tool Maintenance

It shall be the tool owner's and/or employer's responsibility to assure that tools are maintained in a safe operating condition. Tool maintenance and repair shall be performed by authorized, trained, competent personnel. Tools shall be disconnected from their compressed air supply before repairs are attempted. Repairs shall be consistent with the manufacturer's recommended procedures. Tool, hoses and fittings shall be replaced if unsuitable for safe operation. It shall be the tool owner's and/or employer's responsibility to keep required rating markings and warnings on the tool in legible condition.

Safety Instructions

The following instructions are furnished as general guidelines for use of your pneumatic tool. They cannot comprehensively cover all possible or conceivable uses of the subject tool. For additional information on the safe use of air tools, we advise you to obtain a copy of ANSI B186.1 Safety Code for Portable Air Tools, available from the following source:

American National Standards Institute, Inc.
11 West 42nd Street
New York, NY 10036.

The use of the word "shall" in the following instructions, indicates that adherence to the particular requirement is necessary to conform to ANSI B186.1.

Tool Application and Usage

Portable tools shall be used only for the purposes intended in their design and within the capacity for which they were intended and rated. It shall be the tool owner's and/or employer's responsibility to instruct each operator in the safe use of

Read these instructions carefully before attempting to install, operate or service this product. Failure to comply with the instructions could result in personal injury and/or property damage! Retain these instructions for future reference.

Universal Tool

a Brand of Continental Tool Group, Inc.

1660 Silver Beach Road Suite 100, Lake Park, FL 33403

Toll Free 1-800-327-9403

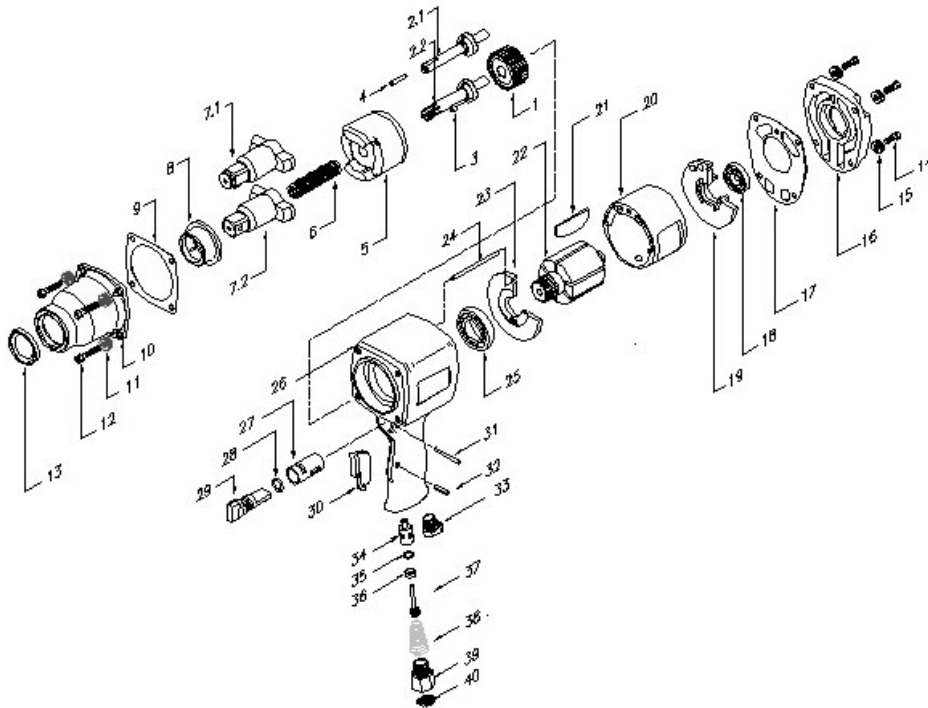


Specifications:

Shank	1"
Speed.....	5,700 RPM
Working Torque.....	232-800 ft. lbs.
Max. Torque	1025 ft. lbs.
Weight.....	11.7 lbs.
Overall length.....	7.6 in.
Average air consumption.....	9.0 CFM
Recommended hose size.....	1/2" I.D.
Air inlet.....	3/8" NPT
Maximum operating pressure	90 psi

Parts Breakdown for UT7560C-1
USE ONLY IMPACT SOCKETS & ACCESSORIES

Sockets and accessories used shall be of the impact socket type. Always check sockets, retainers and drives regularly for wear or damage and replace whenever necessary


Replacement Parts for UT7560C-1

ITEM #	PART	DESC
1	CA-129647	COUPLING
2.1	CA-144724	TIMING SHAFT
3	C-011086	BALL
4	P-001915	TIMING SHAFT PIN
5	CA-129645	CLUTCH DOG
6	CA-129644	RELEASE SPRING
7.2	CA-144726	1" SQ. STD. ANVIL
8	C-129643	CLUTCH HOUSING BUSHING
9	C-130933	CLUTCH HOUSING GASKET
10	C-130973	CLUTCH HOUSING (INCL. # 8, 13)
11	NL6	1/4 NORD LOCK WASHER
12	C-127944	SCREW
13	CA-129676	OIL SEAL
14	C-127944	SCREW
15	NL6	1/4 NORD LOCK WASHER
16	C-130979	HOUSING COVER
17	C-130911	HOUSING COVER GASKET
18	C-068659	BALL BEARING
19	C-129651	UPPER END PLATE
20	C-129649	CYLINDER LINER
21	C-129653	ROTOR BLADES
22	CA-129648	ROTOR
23	C-130906	END PLATE
24	C-105683	LINER DOWEL PIN
25	C-063836	BALL BEARING
26	C-130907	MOTOR HOUSING ASSM (INCL. # 27, 34)
27	C-130908	REVERSE VALVE BUSHING
28	P-092537	O RING
29	C-130913	REVERSE VALVE
30	C-087934	TRIGGER
31	C-132130	VALVE RETAINING PIN
32	P-043882	TRIGGER PIN
33	C-130921	EXHAUST DIFFUSER
34	C-130909	THROTTLE VALVE BUSHING
35	P-083071	O RING
36	CA-129659	RETAINER
37	C-130915	THROTTLE VALVE
38	CA-129677	SPRING
39	CA-129654	BUSHING ASSY. (INCL. #40)
40	C-036000	AIR STRAINER
NL	C-134460	PIN
NL	CA-099902	STOP PIN SPRING

Limited Warranty

Universal Tool warrants its tools to be free from defects in material and workmanship for one year from the date of purchase. This warranty does not apply to tools which have been abused, misused, modified or repaired by someone other than Universal Tool or its authorized service centers. If a Universal Tool proves defective in material of workmanship within one year after purchase, return it to any authorized service center or to Universal Tool, freight prepaid. Please enclose your name, address and adequate proof of purchase date with a brief description of the defect. Universal Tool will, at its option, repair or replace defective tools, free of charge. Repairs or replacements are warranted as described above for the remainder of the warranty period. Universal Tool's sole liability and your exclusive remedy under this warranty is limited to repair or replacement of the defective tool. There are no other warranties expressed or implied and Universal Tool shall not be liable for incidental, consequential or special damages, or any other damages, costs or expense of repair or replacement as described above.