

THAXTON



HIGH PRESSURE HYDROSTATIC TEST PLUGS



25 Leonberg Road
Pittsburgh, PA 16066
P: (800) 245-1148

THAXTON



HIGH PRESSURE HYDROSTATIC TEST PLUGS

THAXTON specializes in engineering and manufacturing high quality test plugs used in hydrostatic testing of tubes, open end pipes, pipelines and pressure vessels.

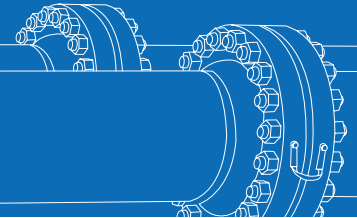
PRECISION MACHINED HARDENED STEEL, ZINC PLATED, FACTORY TESTED

Standard pipe test plugs are factory tested up to 3,000 PSI depending on size. Special sizes and higher pressures can be supplied per customer requirements. Test plugs are held in place by the steel grips which hold against the inside wall of the pipe when the nut is tightened. At the same time, a neoprene seal cup is compressed to make a tight seal. New seal kits may be purchased directly from the factory to prolong the useful life of a Thaxton test plug.

NON-STANDARD TEST PLUGS ARE AVAILABLE FROM THAXTON

For special Non-Standard Test Plugs, please include the following information:

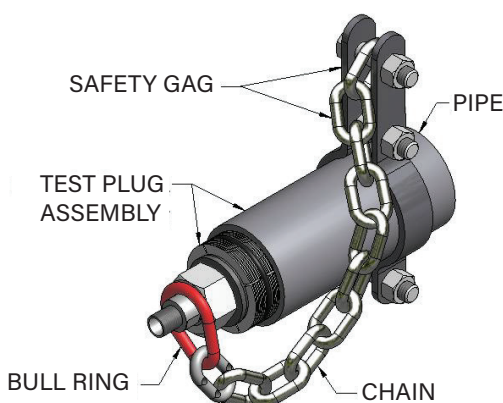
- Inside Diameter of Pipe
- Wall Thickness
- Depth Required
- Pipe Material
- Type of Test Media (Water, Oil, Gases, etc.)



WARNING: Pressure testing can be severely hazardous and safety precautions must be followed.

WARNING: THAXTON test plugs are not to be used as lifting devices.

SAFETY GAGS



The gag is installed after the test plug is in place. The clamp is tightened around the pipe, with the bull ring located loosely over the stem. If the chain tightens, this would signal the operator to reduce pressure and retighten the test plug. The clamp also will restrict expansion of the pipe.

Safety Gags are available for all sizes and recommended for use in pressure testing operations.

THAXTON Test Plugs



TYPE C

Pipe I.D. Sizes .466" to 1.00"



- Mandrel through hole for filling and venting.
- Specifically designed for smooth concentric inside diameter pipe or tubing.
- Tolerances to plus or minus .005".

TYPE D

Pipe I.D. Sizes 1" to 2.5"



- Mandrel through hole for filling and venting.
- Special sizes are available on request.
- Made to fit a specific I.D. with tolerances plus or minus .020".

TYPE D

Pipe I.D. Sizes 3" to 17.5"



- Mandrel through hole for filling and venting.
- Special sizes are available on request.
- Made to fit a specific I.D. with tolerances plus or minus .035".

TYPE E External Closure

Pipe I.D. Sizes .5" to 2.5"



- Thaxton External Closures are designed to quickly seal a plain-end pipe or tube, and eliminate welding on a cap for hydrostatic testing. A perfect leak-free seal can be achieved every time at high pressures.
- Manufactured from alloy steel or stainless steel.

THAXTON Test Plugs



SOCKET WELD PLUGS - Pipe I.D. Sizes .5", .75", 1", 1.25", 1.5", 2"



- Special sizes are available on request.
- All Socket Weld Plugs are available with solid or vented stems.
- Our Socket Weld Plugs eliminate the need for welding plugs onto standard socket weld openings when conducting pressure tests.

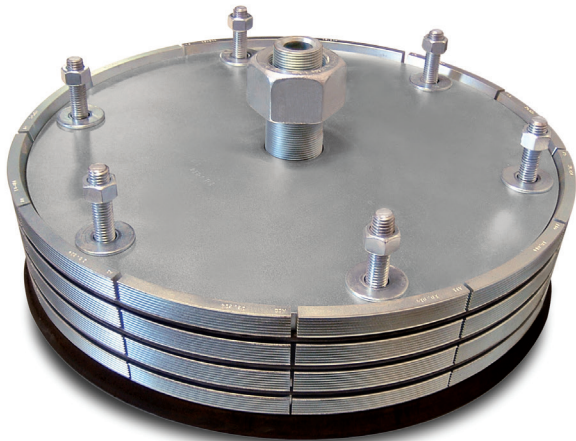
REVERSE PRESSURE PLUGS - Pipe I.D. Sizes 1.25" to 12"



- Thaxton Reverse Pressure Plugs permit testing in a relatively small section of pipe. This avoids filling long sections of pipe with water in order to hydrostatic test a particular weld or segment. Reverse plugs have a solid stem and are held in place by hardened steel reverse grips. The seal is made with a neoprene ring and all steel parts are plated to resist corrosion.
- The stem of each plug has an internal left hand thread to accommodate installation tools (pictured below).



LARGE DIAMETER PIPE PLUGS - Pipe I.D. Sizes 18" to 24"



- Due to the size and weight of the parts, these test plugs are furnished with a series of draw bolts used for expanding the grip segments. The draw bolts allow the installer to expand the grip segments evenly.
- These test plugs are equipped with a female pipe thread in the bottom of the mandrel which allows the customer to install a vent tube, by using a street ell and the appropriate length of pipe. The vent tube will help remove air pockets from the pipe when conducting hydrostatic tests.